

—  
pico

# quick start guide

—  
[WWW.LAMARZOCCO.COM](http://WWW.LAMARZOCCO.COM)

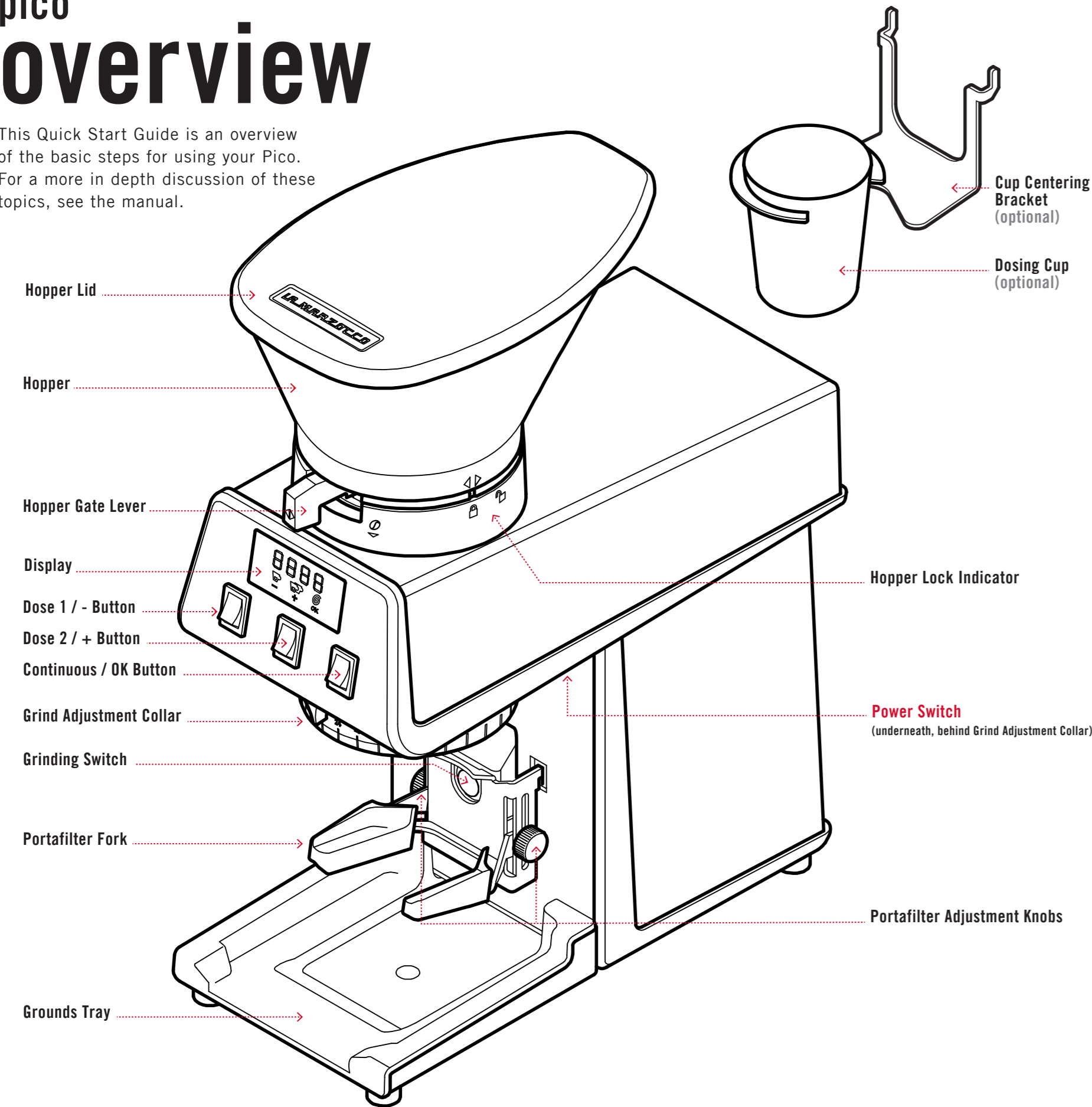
VIA LA TORRE 14/H  
50038 SCARPERIA E SAN PIERO  
FLORENCE - ITALY



la marzocco  
HOME

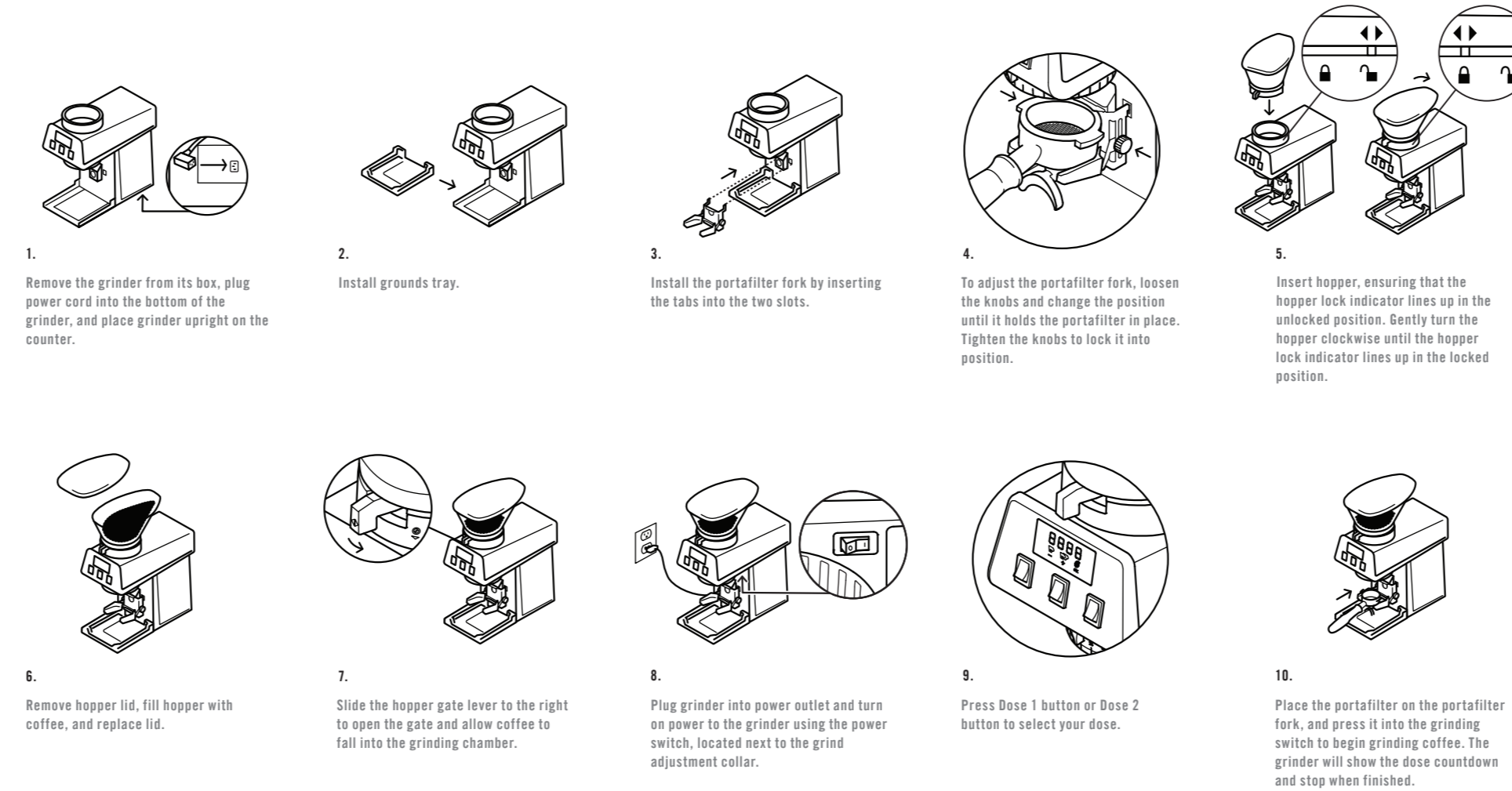
# pico overview

This Quick Start Guide is an overview of the basic steps for using your Pico. For a more in depth discussion of these topics, see the manual.

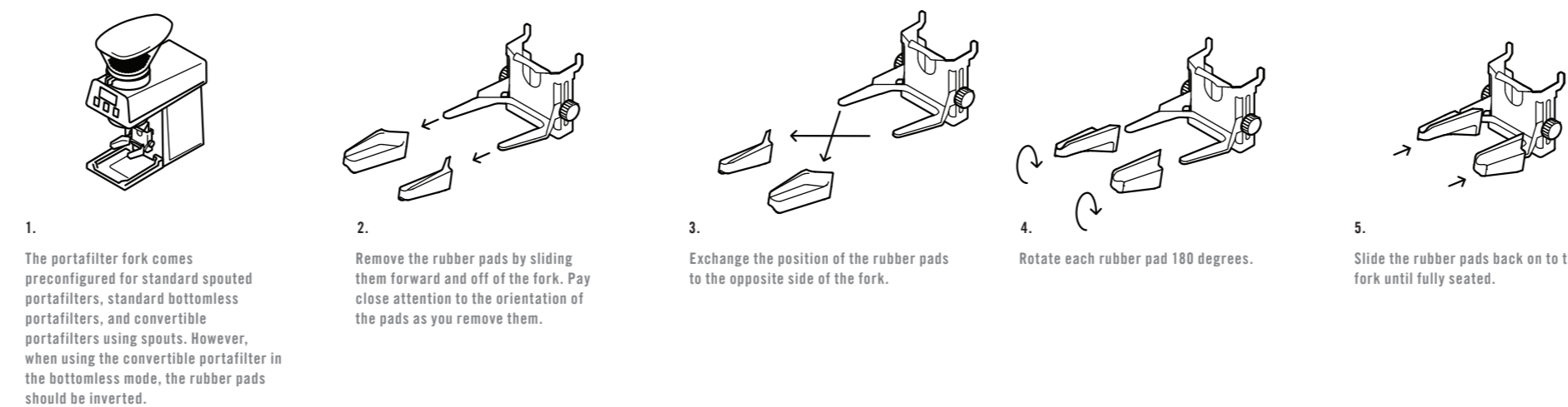


view complete instructions online at [www.lamarzocco.com](http://www.lamarzocco.com)

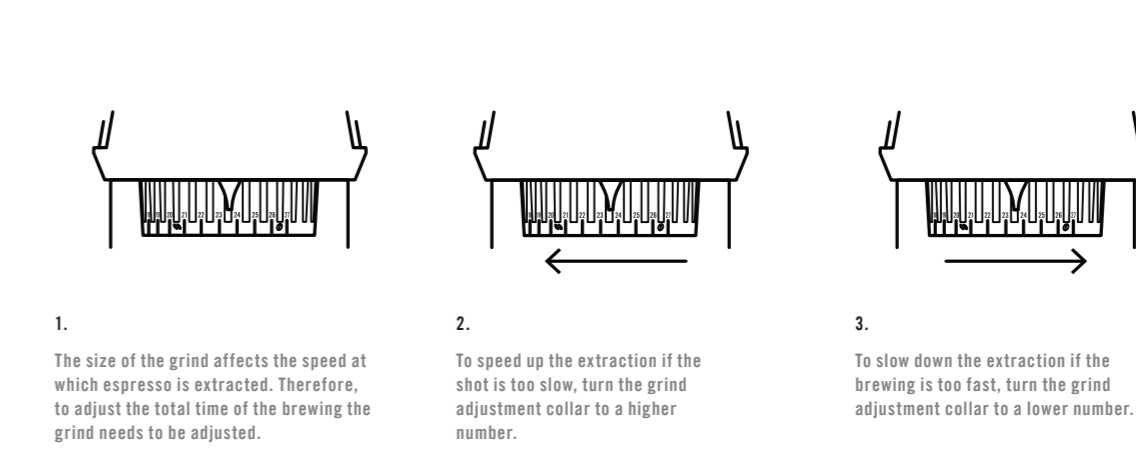
## unpacking & set up, loading coffee, grinding coffee during setup refer to the manual for more detailed information



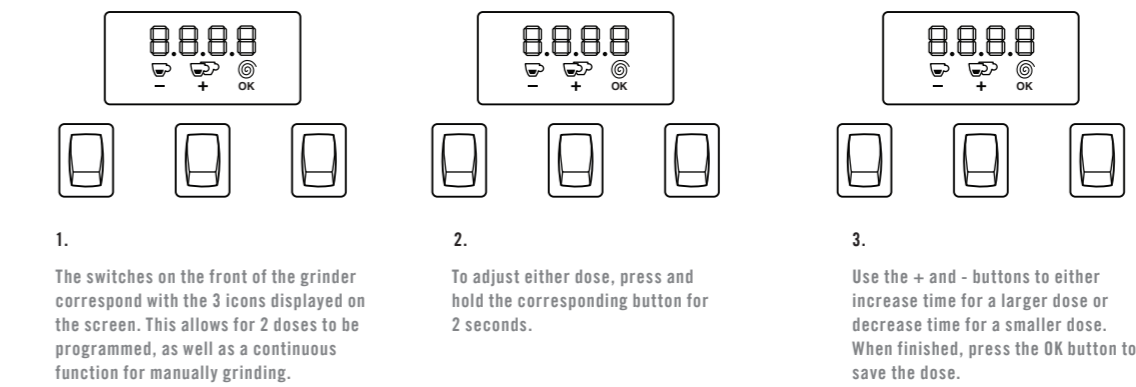
## convertible bottomless portafilter configuration



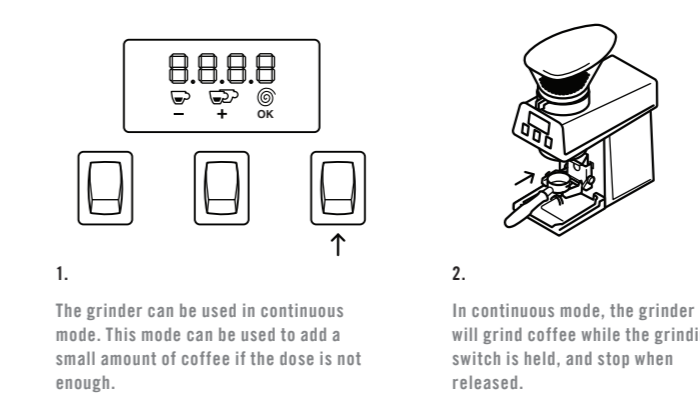
## in order to use the grinder correctly, the dose and the grind must both be set setting grind



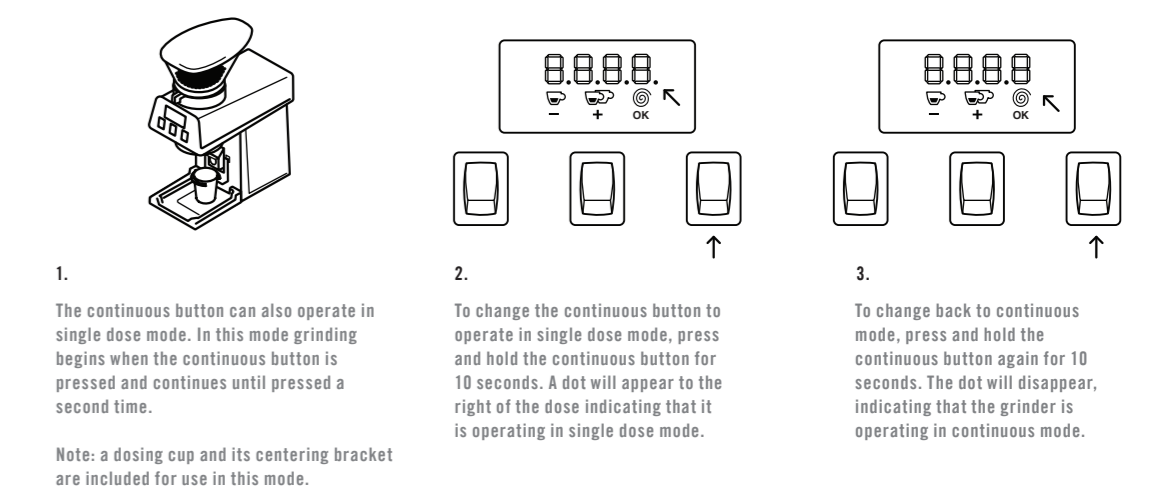
## setting dose



## continuous mode



## single dose mode



for more information  
scan this QR code